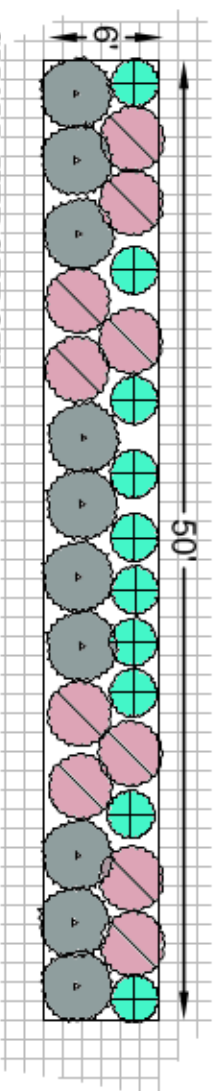


Hedgerow-to-Go

If you're interested in a hedgerow for your property, follow these sample designs when you order from the Kitsap Conservation District Native Plant Sale this year.

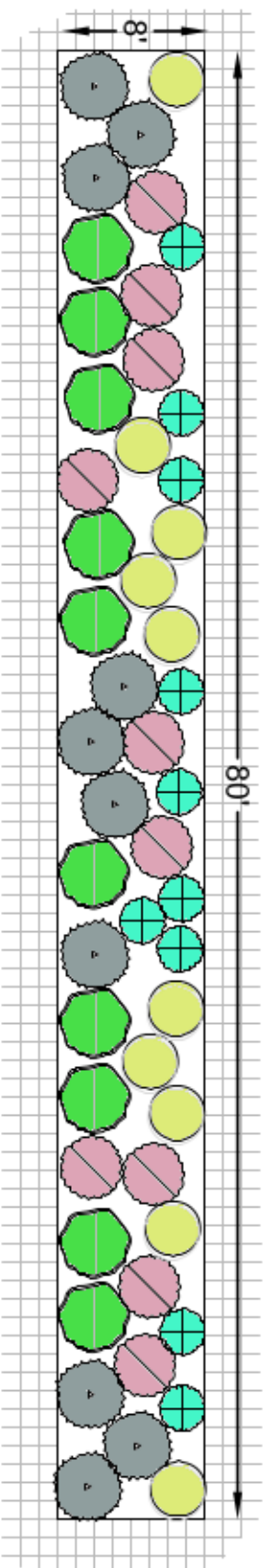
These plants will grow well in sun to part shade and average soil conditions. However, there's lots of room for variations and substitutions to meet your needs.

Contact Jenny Morgan at j-morg@kitsapcd.org if you have questions about planting a hedgerow or how to include native plants on your property.








SMALL HEDGEROW

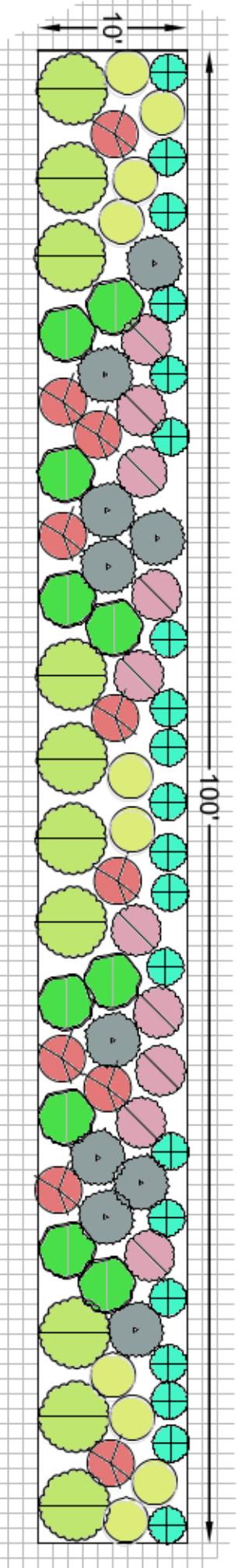
-  One bundle of Red Flowering Currant
-  One bundle of Tall Oregon Grape
-  One bundle of Snowberry
-  One bundle of native perennials placed among the shrubs











MEDIUM HEDGEROW

-  One bundle Mock Orange
-  One bundle of Pacific Ninebark
-  One bundle of Red Flowering Currant
-  One bundle of Snowberry
-  One bundle of Tall Oregon Grape
-  One or two bundles of native perennials placed among the shrubs

Note: a bundle contains 10 plants of the same type.



LARGE HEDGEROW

-  One bundle Mock Orange
-  One bundle of Nootka Rose
-  One bundle of Pacific Ninebark
-  One bundle of Red Flowering Currant
-  Two bundles of Snowberry
-  One bundle of Tall Oregon Grape
-  One bundle of either Beaked Hazelnut or Western Serviceberry
-  One or two bundles of native perennials placed among the shrubs